

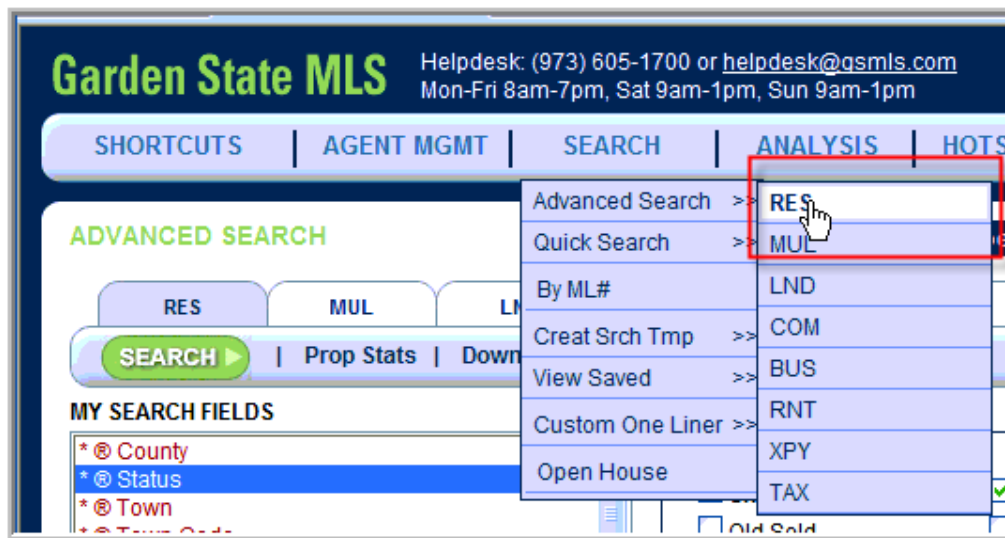
Garden State MLS

Downloading Your Data

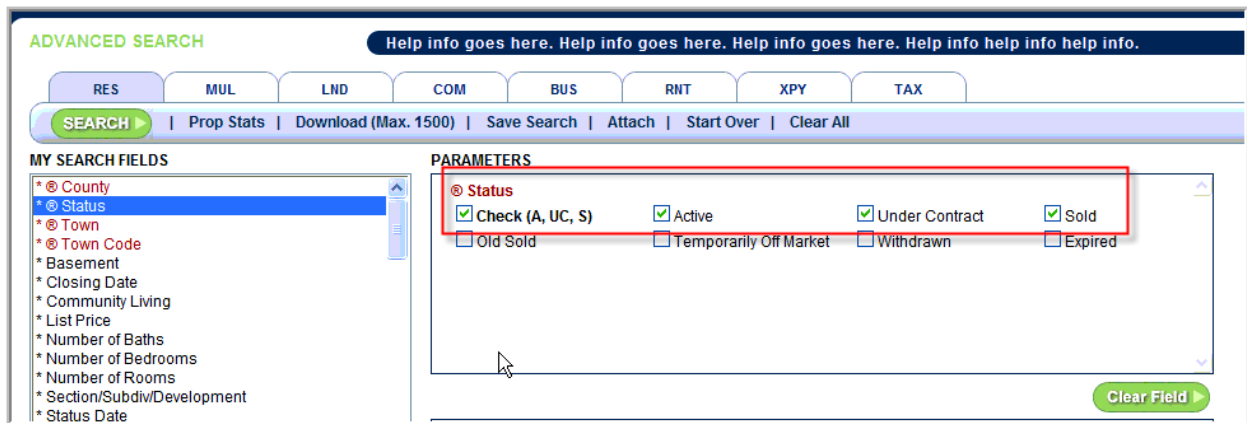
Log into the MLS

You are creating a SEARCH RESULT that contains COMPARABLE listings for your subject property. You will use ALL The criteria that you normally use to create this SEARCH RESULT. You can use geography, sq footage, bedrooms, market area, etc. Any criteria that you would normally use to create your COMPARABLE data set.

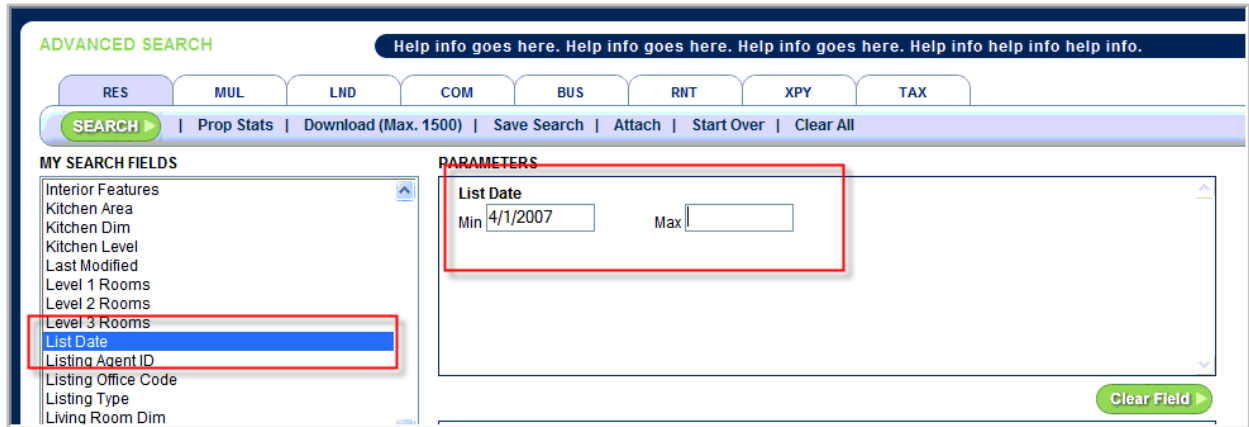
Choose **ADVANCED SEARCH - RES**



Set the **LIST STATUS** to **ACTIVE**, **UNDER CONTRACT** and **SOLD**.

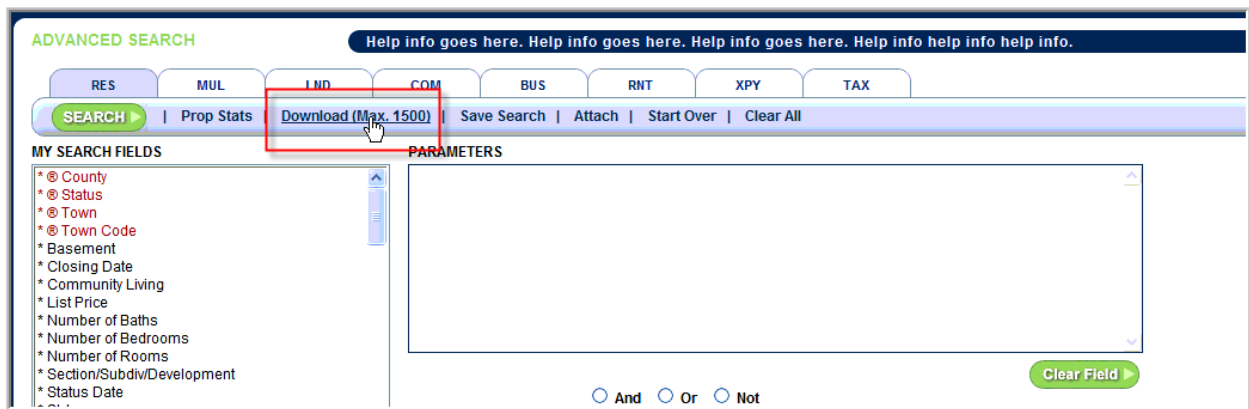


Enter the **LIST DATE** going back **24 months** from the **Effective Date of Appraisal**



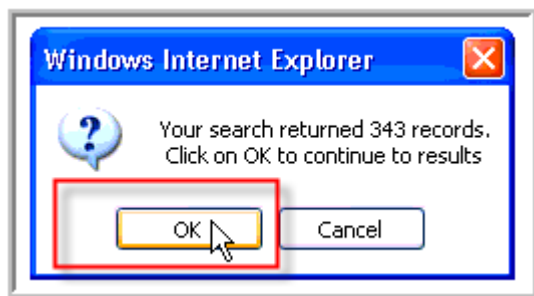
Your **ONLY** date criteria should be **LIST DATE**.

Click **DOWNLOAD**



You **MAY** get the following warning depending on your **SETTINGS**

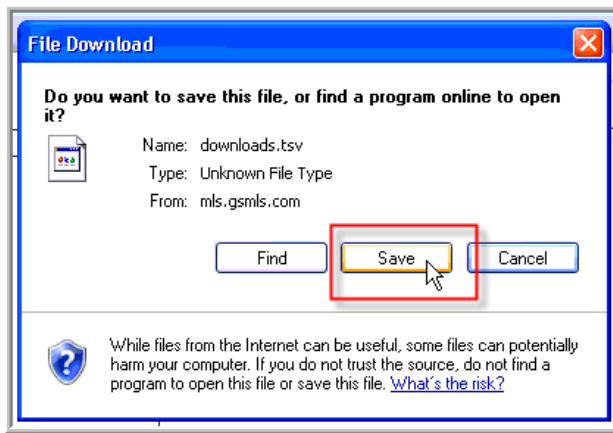
If you get this message click **OK**



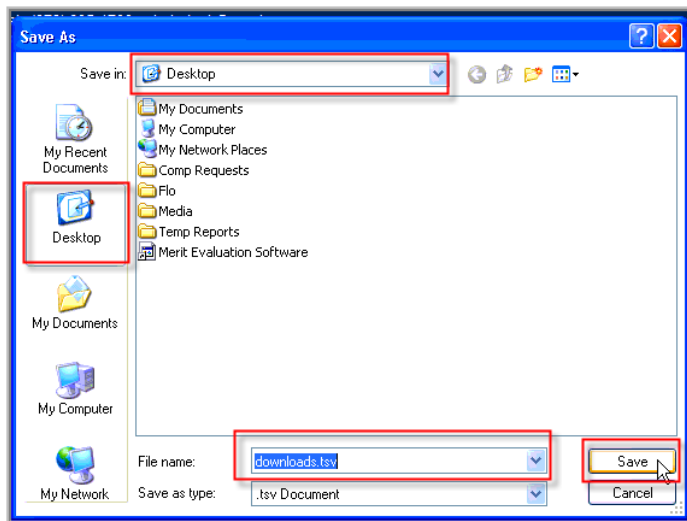
Select **FULL DOWNLOAD** then click the **GREEN DOWNLOAD** button



Click **SAVE**



You can save the file anywhere you want. I like to save files on my desktop so they are easy to find. Take notice of the **FILE NAME** and the **FOLDER** where you saved the file.

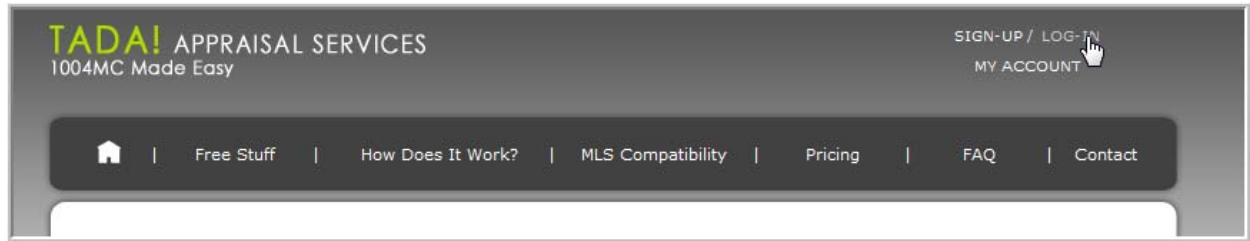


**You have saved your listing data to your computer.
You can now upload your data to the TADA! 1004MC Analysis Tool.**

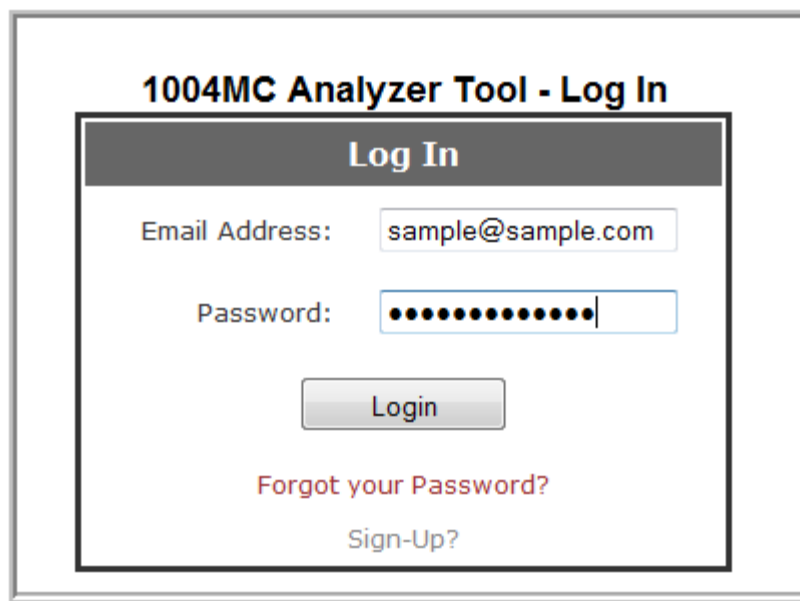
Uploading the Data is EASY

Go to <http://www.1004-mc.com>

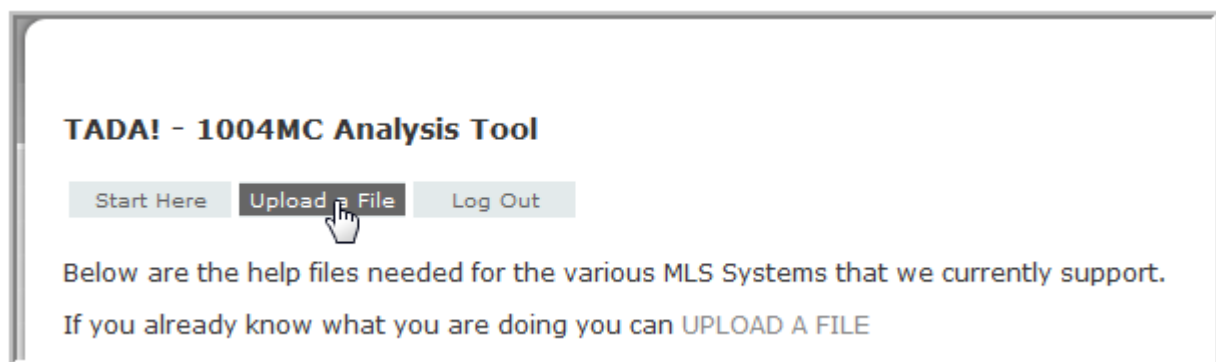
Click on **LOG-IN**



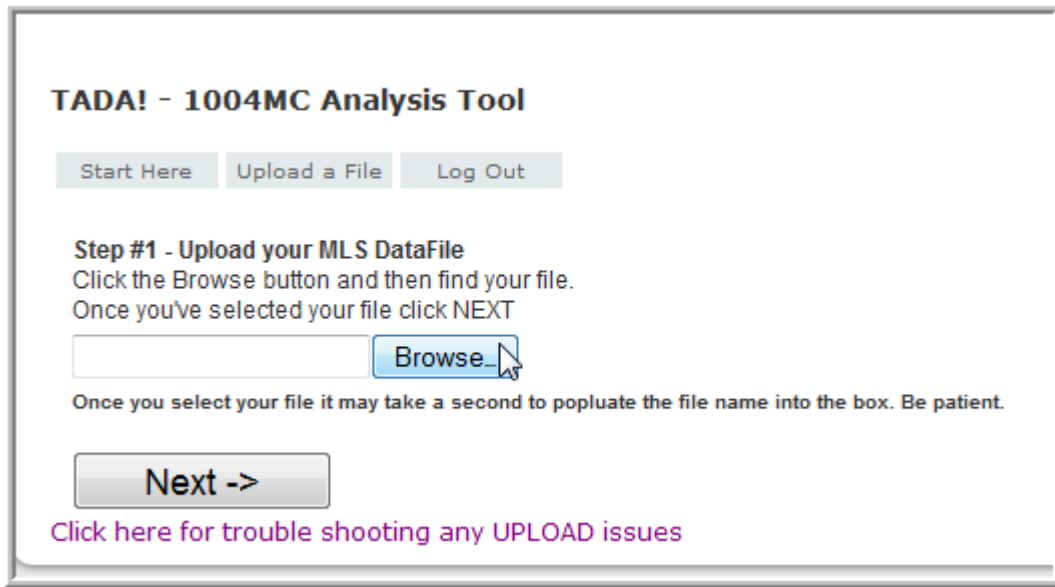
Login



Click on **UPLOAD A FILE**

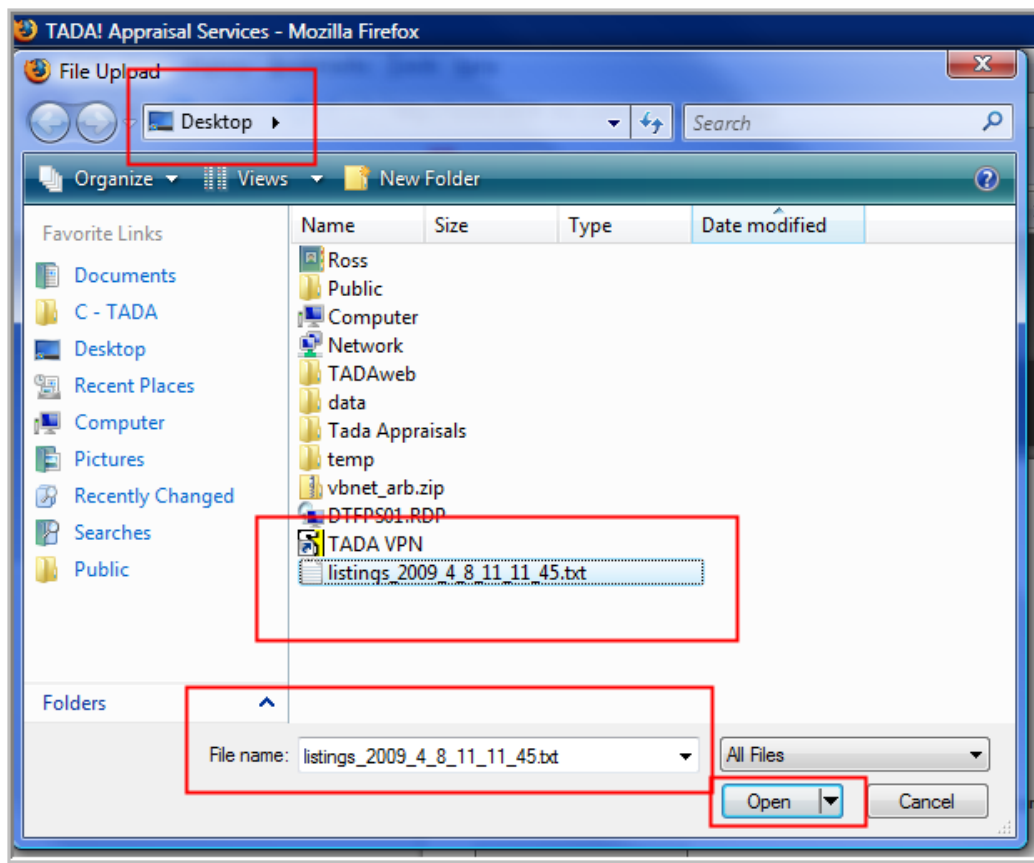


Click on **BROWSE**, find your file. Then click **NEXT**

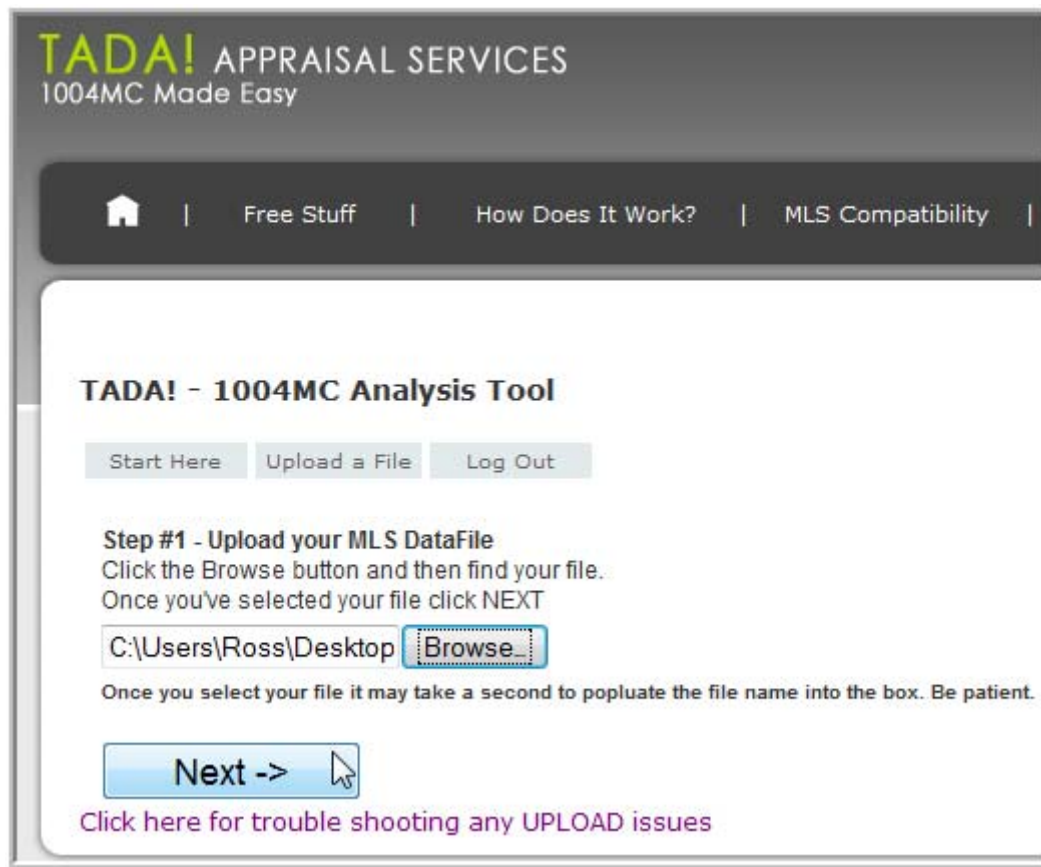


Browse to you file and OPEN it.

Image below is If you saved your MLS file to your **DESKTOP**



That's it! Click NEXT.



TADA! APPRAISAL SERVICES
1004MC Made Easy

Home | Free Stuff | How Does It Work? | MLS Compatibility

TADA! - 1004MC Analysis Tool

Start Here | Upload a File | Log Out

Step #1 - Upload your MLS DataFile
Click the Browse button and then find your file.
Once you've selected your file click NEXT

C:\Users\Ross\Desktop

Once you select your file it may take a second to populate the file name into the box. Be patient.

[Click here for trouble shooting any UPLOAD issues](#)